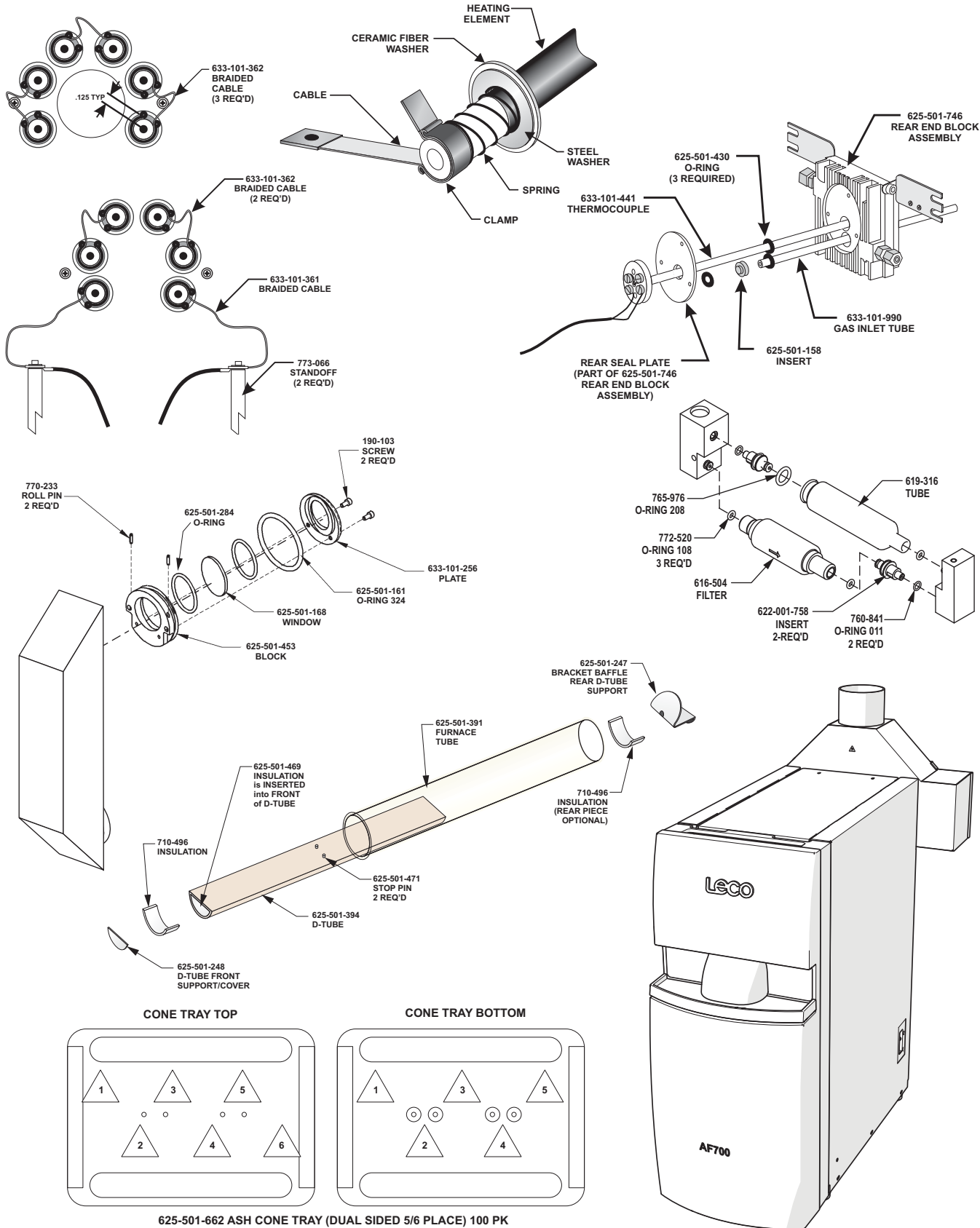


Note: Part numbers and standards' values may change. Consult LECO for the latest information.



See reverse side for contact information

GENERAL OPERATING SUPPLIES

625-501-431	Door Interlock Bypass Key
761-929	Tongs
625-501-662	Ash Cone Tray (Dual sided, 5 and 6 place, 100/pkg)
776-957	Ash Cone Mold, ASTM D1857
625-501-363	Ash Cone Tray Tool
502-496	Gold Wire Calibration Standard (6 in. x 0.2 in. diameter)
501-951	Nickel Wire Calibration Standard (6 in. x 0.2 in. diameter)
502-010	Dextrin Solution
501-233-HAZ	Ceramic Alumina Adhesive
625-501-471	Test Pin Tray (Metal)
763-265	Glass Wool (0.5 lb)
616-504	Filter (0.01 micron)

FURNACE AREA AND GLASSWARE

613-564	T-Clamp Expansion Tool
625-501-328	AF700 Replacement Heating Element Kit including: (2) 633-101-361 Braided Wire w/Clip (5) 633-101-362 Braided Wire (2) 625-501-149 O-Ring (12) 633-103-092 Ceramic Fiber Washer (3) 625-501-430 O-Ring (1) 625-501-464 Heating Element (3/4 inch—6 in set) (12) 625-501-470 Heating Element Clamp (3/4 inch)
625-501-361	AF700 Replacement Furnace Tube Kit including: (2) 625-501-149 O-Ring (1) 625-501-161 O-Ring (2) 625-501-382 Ring Insulation (1) 625-501-391 Mullite Furnace Tube (3) 625-501-430 O-Ring
633-103-027	AF700 High Temperature Kit including: (12) 190-728 Screws (12) 193-055 Washer (2) 625-501-149 O-Ring (12) 633-103-092 Ceramic Fiber Washer (2) 625-501-382 Ring Insulation (3) 625-501-430 O-Ring (1) 625-501-464 Heating Element Set (3/4-inch—6 in set) (2) 633-101-991 SST Braided Wire w/Clip (5) 633-101-992 SST Braided Wire (12) 194-172 Hex Nut (1) 633-101-997 Alumina Furnace Tube
625-501-394	Mullite D-Tube
633-101-990	Mullite Furnace Gas Inlet
633-101-441	Furnace Thermocouple

*NOTES: Part numbers and standards' values may change.
Consult LECO for latest information.*